

Date: Friday, 15th December 2023

Issue: 56

MESSAGE FROM THE HEAD TEACHER

I'll start this week's newsletter with a special well done to Jasmine in 3P who this week was presented with first prize by James Morris MP for her winning design in his annual Christmas card Competition. Well done Jasmine, we're very proud!

We're in the full flow of all things Christmas now. Once Santa had made his visit, the school really did start to buzz with excitement – and so it should.

Our Reception children did us proud again with their Nativity Performance. I don't know why but I'm always surprised at how much the children have come on in a relatively short period of time. To stand on the stage, sing, dance and speak to an audience is truly remarkable. The same could be said of our even younger children in Nursery for their performance last Thursday. Again, there was singing and dancing on the stage with confidence, smiles and laughter. Well done to all the children and staff. These are the kind of things both parents and children remember.

Also on Wednesday last week, we took 6M over to St John's Church. Again it was a lovely occasion; all of the primary schools in Halesowen gathering in the town's oldest church to sing and celebrate together. Year 6 sang their hearts out and were a credit to the school, a special mention also to Ellie in 6M who volunteered to do one of the readings. She was incredible.

As I write this Key Stage 1 are preparing for their Christmas Performance 'Hey Ewe!' and, having heard them rehearse the songs with such gusto, I can't wait to see the finished performance.

We're not finished there though; next week we look forward to the Key Stage 2 Carol Concerts, the Year 1 theatre visit and the Year 6 Mini Fayre! Wow... Have a lovely weekend.

S. Py

EVENTS

2023

Mon 18th Dec
Y2 Polar Express
Pyjama day

Tues 19th Dec
Y3 & Y5 Carols
9:00am

Wed 20th Dec
Y4 & Y6 Carols
9:00am

Thurs 21st Dec
Y1 Theatre Trip

Y5 & Y6 Mini Xmas
Fayre

Fri 22nd Dec
Last day of term
NO AFTERSCHOOL CLUB

CHRISTMAS CARD WINNER



Jasmine (3P) receiving her presentation from James Morris MP for her winning Christmas card design.

The winning card was then presented to
The Rt Hon Sir Lindsay Hoyle MP,
Speaker of the House of Commons.



COST OF LIVING SUPPORT HUBS

NEW

Cost of Living Hubs are located at:

Pensnett, Grace Community Church, Tiled House Lane, Pensnett
Open Tuesdays from 28th November 9:30am - 3:30pm

NEW

Brierley Hill, Brierley Hill Methodist Church, 24 Bank Street, Brierley Hill
Open Alternating Wednesdays, 9:30am - 3:30pm

Halesowen, Halesowen Library, The Cornbow Centre, 7th Floor, Halesowen
Open Alternating Wednesdays, 9:30am - 3:30pm

Stourbridge, Christ Church, High Street, Lye
Open Thursdays from 28th September, 9:30am - 3:30pm

Dudley, Provision House, 80-81 High Street, Dudley
Open Fridays, 9:30am - 3:30pm

Winter Ready Criteria

Updated for the upcoming season, recognising the added financial strains. We are here to help!

WE ARE OPENING A NEW HUB IN PENSNETT ON 28th NOVEMBER 2023!!

The criteria for visiting the Cost of Living Support Hubs has also changed.

**FROM THE W/B 20TH NOVEMBER, HOUSEHOLDS CAN NOW VISIT
THE COST OF LIVING SUPPORT HUBS 3 MORE TIMES.**

Attendance history will be wiped. It doesn't matter if you've attended a Hub before.

Households are permitted to attend up to 3 times starting from the week beginning 20th November.
This means 3 visits across any of our Hubs and not each Hub.

Please remember there must be a minimum of 12 days between each appointment.

Households must reside in the Dudley Borough.

Assistance Available

Insightful presentations on ways to save money on utilities
and how to make your money stretch further.

Practical help relating to access to food, fuel, energy,
available benefits, grants and funds based on qualifying criteria.

Issuing a voucher per household to purchase essentials
(NB: these vouchers can only be issued in a crisis, and are subject to availability)

Issuing a fuel bank voucher
(NB: subject to eligibility)

Identifying other organisations that can help with the struggles being experienced.

How to Book

To see available dates and book an appointment visit our Eventbrite page:

https://CA_DudleyandWolverhampton.eventbrite.com

Support is only offered by attending a pre booked appointment.

Appointments cannot be booked directly at the venues.

Appointments can only be booked via visiting our Eventbrite page.

Only one appointment per household is required, regardless of how many members of the household are attending on the day.

If you are not eligible your appointment may be cancelled or you will be refused entry on the day.

ID Evidence Required

On the day of your appointment, you must bring with you 2 forms of ID:

1 form of ID with your Full Name (passport, travel pass, debit card, driving license etc)

AND

1 recent letter/bill dated within the last 3 months including your name and address to prove you're a Dudley Borough resident.

(e.g. a recent council tax bill, gas/electric/water bill, benefits awards letter, letter from Dudley Council, letter from the Government, PIP or DLA letter, TV license etc)

We reserve the right to request photo ID when you are at the hub to authenticate your ID.

We reserve the right to cancel the appointment should we feel the ID is not that of the appointment holder or that the ID is not authentic.

For more information on Cost of Living support, go to:

<https://DudleyWolverhamptonCA.eventbrite.com>

<https://www.dudley.gov.uk/costofliving>

<https://www.facebook.com/CitizensAdviceDudleyAndWolverhampton/>

Please share this information with the community to ensure we can support as many individuals and families as possible in the coming months.

FOOTBALL SUCCESS

On Monday 4th Dec we played three football matches at Leasowes School.

The 3 games we played we won two and drew one.

The scores were 0-0, 2-1 and 2-0.

The scorers were Rory, Harry K, Harry J and Oliver.

Newfield football team are joint first on points!

We really enjoy working together as a team and hope to win.

Report by Billy and Alfie



IMPORTANT

Can all Parents / Carers be reminded to not call children to them from the external fence or other gates during the day.

This can be a safeguarding issue as the children are in the care of the school staff during the day.

Thank you.

RECEPTION



The busy elves in Reception have been loading Santa's sleigh...
They have also been busy making cards/calendars and doing Christmas craft!



SANTA'S GROTTTO



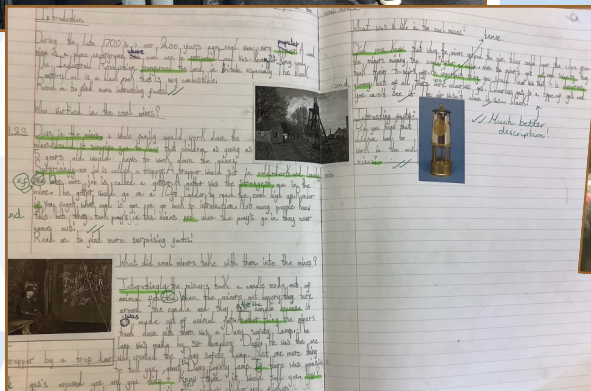
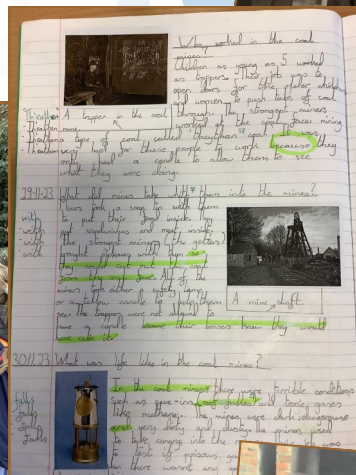
The children had a wonderful time when Santa came to visit Newfield Park

A big thank you to all who supported the PTA



YEAR 3 BLACK COUNTRY LIVING MUSEUM

Year 3 had the opportunity to go to The Black Country Living Museum to learn more about life for coal miners and nail makers more than 200 years ago. It was a great way to start the topic which enabled children to come back and complete some amazing non chronological reports from what they had learned.



Operation Encompass

The school has been given the opportunity to take part in a project that will run jointly between schools and West Midlands Police. Operation Encompass is the reporting to schools, prior to 9am on the next school day, when a child or young person has been exposed to, or involved in, any domestic incident.

Operation Encompass will ensure that a member of the school staff, known as a Key Adult, is trained to allow them to liaise with the police and to use the information that has been shared, in confidence, while ensuring that the school is able to make provision for possible difficulties experienced by children, or their families, who have been involved in, or exposed to, a domestic abuse incident.

We are keen to offer the best support possible to all our pupils and we believe this will be extremely beneficial for all those involved.



ATTENDANCE MATTERS!

When you're in school you...



Have the best possible start in life!

At Newfield Park every day counts!

USEFUL INFORMATION

SCHOOL OFFICE

A reminder to parents that the School Office is open from 8:00AM UNTIL 4:00PM.

You can email the school office for any non urgent enquiries including absences on:

info@newfield.dudley.sch.uk



SCHOOL DINNERS

School dinners must be ordered by Sunday evening for the commencing week.

Unfortunately we may only be able to offer a very limited choice if no order is received, this is due to orders already being placed with our suppliers.



Before & After School Club

Club is highly subscribed at the moment. If your child is not booked in please do not just turn up as there may not be a space. Bookings should be made by Sunday evening online.

New timings & charges: Breakfast club (7.30am - 8.55am) £5.00

After School Club (3.15pm - 5.30pm prompt) £8.00

Please contact Mrs Grant, BASC Manager on 07768893697

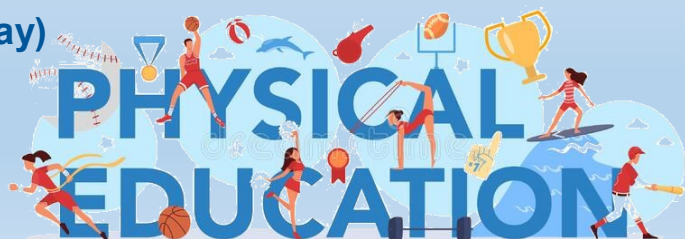


PE

On PE days your child can come to school in their PE Kit.
PE will take place both indoors and outdoors.

RB	Monday
RRY	Tuesday
Year 1	Wednesday & Friday
Year 2	Wednesday
Year 3	Monday (3P also on Tuesday)
Year 4	Thursday
Year 5	Monday
Year 6	Tuesday

No jewellery, including earrings, should be worn and long hair should be tied up.



USEFUL INFORMATION



Please click on the above picture for further information on childhood vaccinations

NHS
Black Country



Please click on the above picture for further information on whether to send your child to school due to illness

Healthier Futures
Black Country Integrated Care System

NEWFIELD COMMUNITY

Would your grandparent's or your elderly neighbours like to be part of our Newfield Park Community?

If yes, then please contact the school office



Important Notice

CHILDREN USING THE
MILLENNIUM GARDEN
EQUIPMENT AFTERSCHOOL
MUST BE SUPERVISED BY
AN ADULT AT ALL TIMES
AND VACATED BY 3:30PM

PARKING ON SCHOOL SITE

We politely ask parents to not park on the staff car park.

This includes when dropping/collecting children from after school clubs and BASC

DOGS ON SCHOOL GROUNDS

Please be aware that **no dogs**, either walking or being carried are allowed anywhere on the school grounds.



CLIMBING TREES



Please **DO NOT** allow your children to climb the trees on the school grounds.

PARKING

We are receiving numerous complaints from local residents with regards to parking on Whittingham Road and surrounding roads.

Could we please ask that parents/carers park considerately and walk whenever possible.

Many thanks for your support.



SAFETY ADVICE

The Child Accident Prevention Trust has some good information on safety advice

Please click on the picture below for further information





Should I keep my child off school?



Yes

Until...

Chickenpox	at least 5 days from the onset of the rash and until all blisters have crusted over
Diarrhoea and Vomiting	48 hours after their last episode
Cold and Flu-like illness (including COVID-19)	they no longer have a high temperature and feel well enough to attend. Follow the national guidance if they've tested positive for COVID-19.
Impetigo	their sores have crusted and healed, or 48 hours after they started antibiotics
Measles	4 days after the rash first appeared
Mumps	5 days after the swelling started
Scabies	they've had their first treatment
Scarlet Fever	24 hours after they started taking antibiotics
Whooping Cough	48 hours after they started taking antibiotics

No

but make sure you let their school or nursery know about...

Hand, foot and mouth	Glandular fever
Head lice	Tonsillitis
Threadworms	Slapped cheek



SCAN ME

Advice and guidance

To find out more, search for health protection in schools or scan the QR code or visit <https://qrco.de/minfec>.

STAY & PLAY

Join us on
Tuesday Mornings
9:00am - 10:30am

We have a thriving Stay & Play for pre-school children where we offer a variety of planned activities designed to meet your child's developmental needs through creative and physical play.
Join other parents/ grandparents /carers for a coffee and a chat!



£1 per child, 50p for additional children
(drinks and healthy snacks included)

We look forward to seeing you!

Online safety update

- Our school uses the RM SafetyNet filtering system, which blocks inappropriate content and operates on all devices connected to our network.
- RM also provide 'Smoothwall', an additional filtering system which monitors the use of devices by staff and pupils in real-time; our head and DSL are immediately notified of any causes for concern.
- When using Teams and other web-based Microsoft applications, children are only able to communicate with pupils and staff within Newfield Park; external contacts are blocked.
- The RM Unify service provides a secure web-portal through which children can access several services using their own password.
- Most devices in school are password controlled: children have their own passwords and log-ins.
- Children are encouraged to use well-known, reliable websites when researching a topic, which are often provided to them by their teacher using a QR Code or URL.



Check out our twitter page on: https://twitter.com/newfield_park

ATTENDANCE

11th Dec - 15th Dec



RB	97.83		4OR	97.10
RRY	82.56		4S	89.66
1J	91.00		5C	97.33
1L	97.00		5R	97.33
2H	96.67		6A	89.63
2R	94.67		6M	86.55
3P	95.52		6R	85.00
3T	90.67			

Well done RB!

All absences are recorded and followed up.

Please email the info box to let us know when your child is absent before 9:30am on the day of the absence .

TERM DATES

Autumn Term 2023

Term Starts: Monday 4th September 2023
Half Term: Mon 30th Oct - Fri 3rd Nov 2023
Term Ends: Friday 22nd December 2023

Spring Term 2024

Term Starts: Monday 8th January 2024
Half Term: Mon 12th Feb - Fri 16th Feb 2024
Term Ends: Friday 22nd March 2024

Summer Term 2024

Term Starts: Monday 8th April 2024
Half Term: Mon 27th May - Fri 31st May 2024
Term Ends: Monday 22nd July 2024

Inset Days/School Closures

Monday 8th January 2024 (Inset)
Thursday 2nd May 2024 (Voting Day)
Monday 6th May 2024 (Bank Holiday)
Monday 22nd July 2024 (Inset)