

Date: Friday, 15th March 2024

Issue: 60

MESSAGE FROM THE HEAD TEACHER

It was National Science Week in school this week and it began with Mrs Saunders' class presenting an assembly to the whole school on Monday. The children did really well to explain Science and its importance. We followed this with each class having a focus on a famous scientist throughout the week. There has also been very much a farm and animal theme lower down the school this week as we had a mobile farm visit our Early Years and Key Stage 1 children. It was a first for us and the excitement on the children's faces made it all very much worth it. There was a range of animals; some they would recognise and some they perhaps wouldn't – so this meant that there was lots of fun learning going on.

Our resident Stone Age Man also visited Year 3 this week. I say resident because we have booked him a few times now. He really does bring the Year 3 History work alive with lots of practical, fun and exciting activities for the children. I think we would find it difficult to find a Stone Age visit for the children that would be as interesting and engaging for them.

Next week is our final week of the term. It's come round really quick and we had to cram a lot in. This won't stop though as next week sees the fourth annual Newfield's Got Talent! Exciting...

Have a lovely weekend.

S. Ry...

EVENTS

2024

Thurs 21st March
4OR Class Assembly

Fri 22nd March
Talent Show

Notice

**End of Term 22nd
March**

**Children return
Mon 8th April**

Y5 RESPONSE FROM MAYOR OF LONDON OFFICE

Dear Year 5 Class,

Thank you for taking the time to write to the Mayor of London and sharing the work you have done creating some very effective leaflets persuading people to visit London!

As you can appreciate, the Mayor receives a high volume of correspondence and is unfortunately unable to respond to all e-mails personally. Your email has been passed to the Mayor of London's Children and Young Londoner's team.

We were delighted to read all the wonderful leaflets designed by the pupils – it's clear to see the hard work and creativity that went into designing them. They are very well researched, with vibrant pictures and the trip advisor stickers are a nice touch!

It is great to see young people interested in London, and hopefully these leaflets went some way in convincing your parents to visit London during the half-term.

Thank you again for taking the time to write to the Mayor and sending in your wonderful leaflets. We'd like to wish you, and everyone at Newfield Park Primary School, all the best for the future.

Kind Regards

Children and Young Londoners Team Greater London Authority



MINI FARM VISIT



Nursery, Reception, Y2 (and Mrs Morris from the office) had a wonderful time meeting the different animals that visited our school.

We saw alpacas, goats, lambs, chickens, rabbits and guinea pigs



SUCCESS CORNER



Estelle 3T performed in the orchestra at Symphony Hall Birmingham playing the violin.

Well done Estelle, what an amazing experience!!



SCIENCE WEEK

This week has been British Science Week; the week started off with the Science Ambassadors leading a whole school assembly.



KS1 enjoyed an online Materials workshop delivered by Jenny Watson from the Ogden Trust. KS2 will be taking part in an online 'Science is Magic' show next week.

All year groups have learnt about a significant scientist and undertaken a range of activities based on this year's theme of 'Time':

- Nursery have looked at a variety of scientists.
- Reception have continued to learn about Mae Jemison.
- Year 1 have been learning about seasons and how the weather changes throughout the year. They made a spinning season wheel and sorted the correct months of the year into each season. As well as this, they looked at Lucy Verasamy, a scientist and meteorologist who presents the weather on ITV. They watched different forecasts and then planned and presented their own forecasts using a weather map in the portal.
- Year 2 have discovered more about the life of David Bellamy.
- Year 3 investigated Mary Anning and her work involving fossils.
- Year 4 have been designing and making a farming machine or a farm of the future. They will then be adding lights (as part of their Electricity unit) They researched about Michael Faraday, who created the Faraday Cage, where all of the positive charges go to the top and the negative charges repel to the bottom; they learnt it helps to keep people safe around electricity.
- Year 5 have examined the role of Jane Goodall and her work with chimpanzees.
- Year 6 researched Nikola Tesla and made a poster about him and his discoveries.

It really has been a fantastic, enjoyable week! A quick reminder that any entries for the British Science Week poster competition must be sent to Mrs. Saunders on, or before Wednesday 20th March. Remember the theme is 'Time'.



YEAR 1 SCIENCE WEEK

As part of British Science Week, Year 1 and 2 took part in a live science workshop on zoom! This was led by Dr Jenny Watson, who works with Ogden Trust partnership. We joined over 20 other schools to complete some online investigations exploring, classifying and observing materials. It was great fun! Thank you to Ms Saunders for organising it.

Year 1 have been busy learning how to be weather forecasters. The children watched a few weather forecasts and looked at the symbols and language used by the presenters. They then planned their own forecast before presenting them live in the portal!





Sessions can be attended face to face or via TEAMS
Please email to book:

parenting@dudley.gov.uk

Two hours is all you need for a Triple P discussion group/workshop for Developing good bedtime routines or Hassle-free mealtimes with children.

😊 Perfect for adding to your tool kit of ideas 😊



SLEEP and MEALTIME WORKSHOPS

Would you like your child to sleep in their own bed? Not call out? Sleep longer?

Does your child have nightmares/terrors? Is your child a picky eater? Do they refuse to sit at a table or eat well? Is your child aged 1-11 years? **Then these could be for you!**

Day	Date	Time	Venue	Workshop type
Wednesday	10/4/24	9:45 to 11:45 am	Halesowen Family Hub-DY9 8HT	Sleep-Developing good bedtime routines
Tuesday	21/5/24	12:30 to 2:30 pm	Stourbridge family hub-DY8 1XF	Sleep-Developing good bedtime routines
Monday	10/6/24	12:30 to 2:30 pm	Brierley Hill Family Hub-DY5 3DY	Food- Hassle free mealtimes with children
Thursday	18/7/24	9:45 to 11:45 am	Coseley Family Hub-WV14 9DS	Sleep-Developing good bedtime routines
Wednesday	25/7/24	9:45 to 11:45 am	Dudley Central Family Hub-DY2 8LJ	Food- Hassle free mealtimes with children
Wednesday	25/9/24	9:45 to 11:45	Dudley Central Family Hub-DY2 8LJ	Sleep-Developing good bedtime routines

Operation Encompass

The school has been given the opportunity to take part in a project that will run jointly between schools and West Midlands Police. Operation Encompass is the reporting to schools, prior to 9am on the next school day, when a child or young person has been exposed to, or involved in, any domestic incident.

Operation Encompass will ensure that a member of the school staff, known as a Key Adult, is trained to allow them to liaise with the police and to use the information that has been shared, in confidence, while ensuring that the school is able to make provision for possible difficulties experienced by children, or their families, who have been involved in, or exposed to, a domestic abuse incident.

We are keen to offer the best support possible to all our pupils and we believe this will be extremely beneficial for all those involved.



ATTENDANCE MATTERS!

When you're in school you...



Have the best possible start in life!

At Newfield Park every day counts!

USEFUL INFORMATION

SCHOOL OFFICE

A reminder to parents that the School Office is open from 8:00AM UNTIL 4:00PM.

You can email the school office for any non urgent enquiries including absences on:

info@newfield.dudley.sch.uk



SCHOOL DINNERS

School dinners must be ordered by Sunday evening for the commencing week.

Unfortunately we may only be able to offer a very limited choice if no order is received, this is due to orders already being placed with our suppliers.



Before & After School Club

Club is highly subscribed at the moment. If your child is not booked in please do not just turn up as there may not be a space. Bookings should be made by Sunday evening online.

New timings & charges: Breakfast club (7.30am - 8.55am) £5.00

After School Club (3.15pm - 5.30pm prompt) £8.00

Please contact Mrs Grant, BASC Manager on 07768893697



PE

On PE days your child can come to school in their PE Kit.
PE will take place both indoors and outdoors.

RB Monday

RRY Tuesday

Year 1 Wednesday & Friday

Year 2 Wednesday

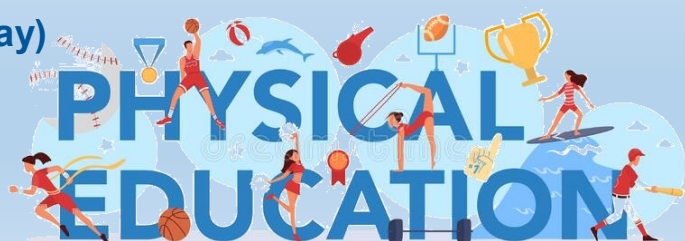
Year 3 Monday (3P also on Tuesday)

Year 4 Thursday

Year 5 Monday

Year 6 Tuesday

No jewellery, including earrings, should be worn and long hair should be tied up.



USEFUL INFORMATION



Please click on the above picture for further information on childhood vaccinations

NHS
Black Country



Please click on the above picture for further information on whether to send your child to school due to illness

Healthier Futures
Black Country Integrated Care System

NEWFIELD COMMUNITY

Would your grandparent's or your elderly neighbours like to be part of our Newfield Park Community?

If yes, then please contact the school office



Important Notice

CHILDREN USING THE
MILLENNIUM GARDEN
EQUIPMENT AFTERSCHOOL
MUST BE SUPERVISED BY
AN ADULT AT ALL TIMES
AND VACATED BY 3:30PM

PARKING ON SCHOOL SITE

We politely ask parents to not park on the staff car park.

This includes when dropping/collecting children from after school clubs and BASC

DOGS ON SCHOOL GROUNDS

Please be aware that **no dogs**, either walking or being carried are allowed anywhere on the school grounds.



CLIMBING TREES



Please **DO NOT** allow your children to climb the trees on the school grounds.

PARKING

We are receiving numerous complaints from local residents with regards to parking on Whittingham Road and surrounding roads.

Could we please ask that parents/carers park considerately and walk whenever possible.

Many thanks for your support.



SAFETY ADVICE

The Child Accident Prevention Trust has some good information on safety advice

Please click on the picture below for further information



STAY & PLAY

Join us on
Tuesday Mornings
9:00am - 10:30am

We have a thriving Stay & Play for pre-school children where we offer a variety of planned activities designed to meet your child's developmental needs through creative and physical play.
Join other parents/ grandparents /carers for a coffee and a chat!



£1 per child, 50p for additional children
(drinks and healthy snacks included)

We look forward to seeing you!

Online safety update

- Our school uses the RM SafetyNet filtering system, which blocks inappropriate content and operates on all devices connected to our network.
- RM also provide 'Smoothwall', an additional filtering system which monitors the use of devices by staff and pupils in real-time; our head and DSL are immediately notified of any causes for concern.
- When using Teams and other web-based Microsoft applications, children are only able to communicate with pupils and staff within Newfield Park; external contacts are blocked.
- The RM Unify service provides a secure web-portal through which children can access several services using their own password.
- Most devices in school are password controlled: children have their own passwords and log-ins.
- Children are encouraged to use well-known, reliable websites when researching a topic, which are often provided to them by their teacher using a QR Code or URL.



Check out our twitter page on: https://twitter.com/newfield_park

ATTENDANCE

11th—15th March



RB	95.49		4OR	97.74
RRY	96.00		4S	97.93
1J	84.23		5C	96.00
1L	86.90		5R	99.35
2H	96.67		6A	98.15
2R	93.00		6M	91.03
3P	98.00		6R	90.00
3T	98.58			

Well done 5R!

All absences are recorded and followed up.

Please email the info box to let us know when your child is absent before 9:30am on the day of the absence .

TERM DATES

Autumn Term 2023

Term Starts: Monday 4th September 2023
Half Term: Mon 30th Oct - Fri 3rd Nov 2023
Term Ends: Friday 22nd December 2023

Spring Term 2024

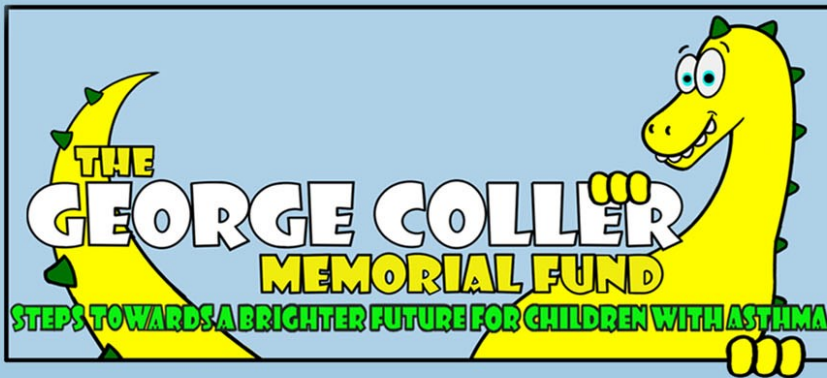
Term Starts: Monday 8th January 2024
Half Term: Mon 12th Feb - Fri 16th Feb 2024
Term Ends: Friday 22nd March 2024

Summer Term 2024

Term Starts: Monday 8th April 2024
Half Term: Mon 27th May - Fri 31st May 2024
Term Ends: Monday 22nd July 2024

Inset Days/School Closures

Thursday 2nd May 2024 (Voting Day)
Monday 6th May 2024 (Bank Holiday)
Monday 22nd July 2024 (Inset)



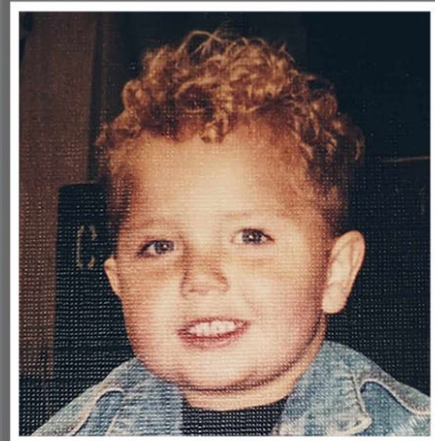
STOP SCAN SAVE A LIFE

George's Story

George was a beautiful, happy boy who loved dinosaurs and jumping in puddles.

He was looking forward to starting school but, tragically, at the age of 3½ years, George suffered an asthma attack, and died.

His mother, Kim, set up this fund, determined to make sure no other family ever suffers the same fate.



In the UK:

- 1** million Children are receiving asthma treatment
- 1** in 11 children have asthma
- 1** child is admitted into hospital with asthma every 17 minutes - 75% of these admissions are avoidable
- 1** person dies from asthma every 8 hours - 90% of these deaths are avoidable

£1 a month could make all the difference. Please go to our website:
www.georgecoller.co.uk and click the donate button on the home page.

OR please use the QR code below to make a minimum donation of **£2**

George's charity is the only charity to provide children's asthma nurses to the NHS

Please help prevent another child's needless death by keeping our asthma nurses in post

THANK YOU!



To Donate
scan the
QR code



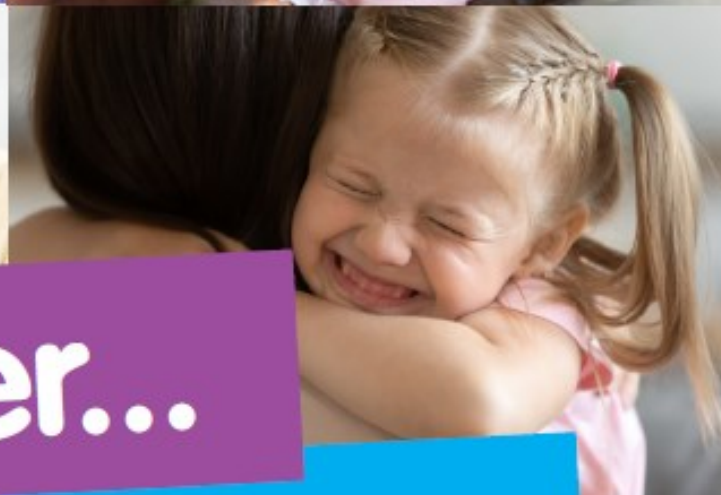
Scan with your smartphone
camera or QR code reader app

Steps towards a brighter future for children with asthma

Registered Charity No. 1079269

Patron: Andy Townsend

for help and support, go to our website:
www.georgecoller.co.uk



We foster...

YOU can too

Dudley Council needs new foster carers - have you got what it takes?

**Fostering in Dudley offers a rewarding career,
training, guidance and 24 hour support 365 days a year**

**Visit our website for more information
and drop-in session dates**

www.fosteringindudley.org.uk

call 01384 815833

or email fosteringrecruitment@dudley.gov.uk



fostering in dudley
the best job in the world

**"THIS MORNING,
HE HAD A RUNNY
NOSE... BUT LOOK
AT HIM NOW!"**

**MOMENTS
MATTER,
ATTENDANCE
COUNTS.**



HM Government

Head to the NHS website to find out more.



**MOMENTS
MATTER,
ATTENDANCE
COUNTS.**

**"THIS MORNING, HE
WAS WORRIED ABOUT
SCHOOL... BUT LOOK
AT HIM NOW!"**

**MOMENTS
MATTER,
ATTENDANCE
COUNTS.**



HM Government

Head to the Education Hub to find out more.



**MOMENTS
MATTER,
ATTENDANCE
COUNTS.**