

**Date: Friday, 15th September 2023**

**Issue: 51**

## MESSAGE FROM THE HEAD TEACHER

We've had a really good start to the term. You can tell that the children have had a break and are well rested; there's a lovely feel around school as everyone seems ready for the year ahead. All the children look very smart in their uniforms, and I thank you all for that.

As usual we have started the term in full flow and already we are looking forward to the Year 5 trip to Carding Mill Valley; this was planned intentionally to kick start their Rivers topic in Geography. We also welcomed both our new Reception and Nursery children to the school. It's the fullest that Nursery has ever been and it's great to see lots of happy, smiling children taking their very first steps in education in our newly expanded provision.

I was meaning to update parents and carers regarding our transition to Shireland, but as yet there's really not much else to report. The uniform is still being prepared - I'll let you see that as soon as we have, and the due diligence activities are going on in the background. I believe that the academisation will go to Shireland Trustees this half term, after which it will then be passed onto the Department for Education for approval. If you have any questions, at any point, please make sure you contact me through the usual channels.

Have a restful weekend.

*S. Pryor*

## EVENTS

**2023**

**Mon 18th Sept**  
Y1—Y6

Meet the Teacher

**Tues 26th Sept**  
Harvest Assembly

**Wed 27th Sept**  
Y5 trip to  
Carding Mill Valley

**Tues 3rd Oct**  
Y4 trip to Clent

**Wed 4th Oct**  
Y2 Samuel Pepys visit

**Tues 10th Oct**  
Reception  
Reading Workshop

**Thurs 12th Oct**  
6A Class Assembly

**Tues 17th Oct**  
Cross Country

**Thurs 19th Oct**  
6M Class Assembly

**Thurs 26th Oct**  
6R Class Assembly

## HARVEST

Our Harvest Festival will take place on **Tuesday 26th September**.

We will be collecting food donations for Black Country Foodbank.

Please help support this charity by donating items from the list below:

1LTR CARTONS LONG LIFE MILK

1LTR CARTONS LONG LIFE FRUIT JUICE

BREAKFAST CEREAL—MULTIPACK

PACKET MASH POTATO

PASTA SAUCE/COOKING SAUCES

TINNED FRUIT IN JUICE

TINNED FISH

TINNED SOUP

MEAT FREE TINNED RAVIOLI, CHILLI, MACARONI CHEESE

CARRIER BAGS (STRONG ONES IF POSSIBLE PLEASE AS THEY ARE IN SHORT SUPPLY)

**BLACK COUNTRY  
FOODBANK**  
LOVE . CONNECT . INVEST

HARVEST FESTIVAL



## REMINDER

**Y1 - Y6**

**Monday 18th Sept**  
**'Meet the Teacher'**  
**Event**

**3.30 until 4.15pm**

**4.45 until 5.15pm**





## SUCCESS CORNER



Well done to Jessica (6A) who achieved silver for Wales in her specialism Poomsae Taekwondo!



Well done to Gracie (5C), Stevie (5C), Adelie (3P) and Georgia (2R) who recently took part in a dance competition and achieved gold in all five dances entered!



## Operation Encompass

The school has been given the opportunity to take part in a project that will run jointly between schools and West Midlands Police. Operation Encompass is the reporting to schools, prior to 9am on the next school day, when a child or young person has been exposed to, or involved in, any domestic incident.

Operation Encompass will ensure that a member of the school staff, known as a Key Adult, is trained to allow them to liaise with the police and to use the information that has been shared, in confidence, while ensuring that the school is able to make provision for possible difficulties experienced by children, or their families, who have been involved in, or exposed to, a domestic abuse incident.

We are keen to offer the best support possible to all our pupils and we believe this will be extremely beneficial for all those involved.



## ATTENDANCE MATTERS!

When you're in school you...



Have fun



Make new friends



Gain qualifications



Achieve



Develop new skills



Experience new things

Build your confidence



& self esteem

Develop awareness of other cultures, religion, ethnicity and gender differences



Have the best possible start in life!

At Newfield Park every day counts!

# USEFUL INFORMATION

## SCHOOL OFFICE

A reminder to parents that the School Office is open from 8:00AM UNTIL 4:00PM.

You can email the school office for any non urgent enquiries including absences on:

[info@newfield.dudley.sch.uk](mailto:info@newfield.dudley.sch.uk)



## SCHOOL DINNERS

School dinners must be ordered by Sunday evening for the commencing week.

Unfortunately we may only be able to offer a very limited choice if no order is received, this is due to orders already being placed with our suppliers.



## Before & After School Club

Club is highly subscribed at the moment. If your child is not booked in please do not just turn up as there may not be a space. Bookings should be made by Sunday evening online.

New timings & charges: Breakfast club (7.30am - 8.55am) £5.00

After School Club (3.15pm - 5.30pm) £8.00

Please contact Mrs Grant, BASC Manager on 07768893697

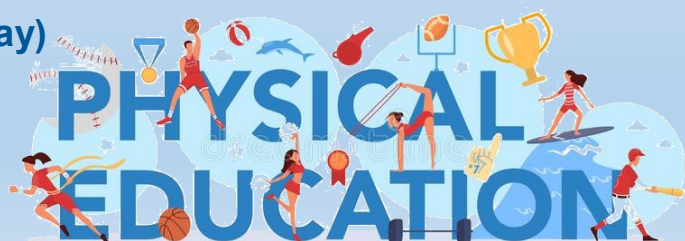


## PE

On PE days your child can come to school in their PE Kit.  
PE will take place both indoors and outdoors.

RB	Monday
RRY	Tuesday
Year 1	Wednesday & Friday
Year 2	Wednesday
Year 3	Monday (3P also on Tuesday)
Year 4	Thursday
Year 5	Monday
Year 6	Tuesday

No jewellery, including earrings, should be worn and long hair should be tied up.





# USEFUL INFORMATION



Please click on the above picture for further information on childhood vaccinations



**Black Country**



Please click on the above picture for further information on whether to send your child to school due to illness

**Healthier Futures**

Black Country Integrated Care System

## NEWFIELD COMMUNITY

Would your grandparent's or your elderly neighbours like to be part of our Newfield Park Community?

If yes, then please contact the school office



## Important Notice

CHILDREN USING THE MILLENNIUM GARDEN EQUIPMENT AFTERSCHOOL MUST BE SUPERVISED BY AN ADULT AT ALL TIMES AND VACATE BY 3:30PM

## PARKING ON SCHOOL SITE

We politely ask parents to not park on the staff car park.

This includes when dropping/collecting children from after school clubs and BASC

## DOGS ON SCHOOL GROUNDS

Please be aware that no dogs, either walking or being carried are allowed anywhere on the school grounds.



## CLIMBING TREES



Please **DO NOT** allow your children to climb the trees on the school grounds.

## SAFETY ADVICE

The Child Accident Prevention Trust has some good information on safety advice

Please click on the picture below for further information





# Should I keep my child off school?

## Yes

### Until...

Chickenpox	at least 5 days from the onset of the rash and until all blisters have crusted over
Diarrhoea and Vomiting	48 hours after their last episode
Cold and Flu-like illness (including COVID-19)	they no longer have a high temperature and feel well enough to attend. Follow the national guidance if they've tested positive for COVID-19.
Impetigo	their sores have crusted and healed, or 48 hours after they started antibiotics
Measles	4 days after the rash first appeared
Mumps	5 days after the swelling started
Scabies	they've had their first treatment
Scarlet Fever	24 hours after they started taking antibiotics
Whooping Cough	48 hours after they started taking antibiotics

## No

but make sure you let their school or nursery know about...

Hand, foot and mouth	Glandular fever
Head lice	Tonsillitis
Threadworms	Slapped cheek



SCAN ME

### Advice and guidance

To find out more, search for **health protection in schools** or scan the QR code or visit <https://qrco.de/minfec>.



## STAY & PLAY

Join us on  
**Tuesday Mornings**  
**9:00am - 10:30am**

We have a thriving Stay & Play for pre-school children where we offer a variety of planned activities designed to meet your child's developmental needs through creative and physical play.  
Join other parents/ grandparents /carers for a coffee and a chat!



£1 per child, 50p for additional children  
(drinks and healthy snacks included)

We look forward to seeing you!

## Online safety update

- Our school uses the RM SafetyNet filtering system, which blocks inappropriate content and operates on all devices connected to our network.
- RM also provide 'Smoothwall', an additional filtering system which monitors the use of devices by staff and pupils in real-time; our head and DSL are immediately notified of any causes for concern.
- When using Teams and other web-based Microsoft applications, children are only able to communicate with pupils and staff within Newfield Park; external contacts are blocked.
- The RM Unify service provides a secure web-portal through which children can access several services using their own password.
- Most devices in school are password controlled: children have their own passwords and log-ins.
- Children are encouraged to use well-known, reliable websites when researching a topic, which are often provided to them by their teacher using a QR Code or URL.



Check out our twitter page on: [https://twitter.com/newfield\\_park](https://twitter.com/newfield_park)

## ATTENDANCE

11th—15th September



RB	95.39		4OR	99.57
RRY	100.00		4S	98.12
1J	95.21		5C	94.58
1L	97.63		5R	95.83
2H	97.71		6A	97.33
2R	98.75		6M	93.32
3P	96.67		6R	97.08
3T	97.29			

Well done RRY! 100% Attendance

All absences are recorded and followed up.

Please email the info box to let us know when your child is absent before 9:30am on the day of the absence .

## TERM DATES

### Autumn Term 2023

Term Starts: Monday 4th September 2023

Half Term: Mon 30th Oct - Fri 3rd Nov 2023

Term Ends: Friday 22nd December 2023

### Spring Term 2024

Term Starts: Monday 8th January 2024

Half Term: Mon 12th Feb - Fri 16th Feb 2024

Term Ends: Friday 22nd March 2024

### Summer Term 2024

Term Starts: Monday 8th April 2024

Half Term: Mon 27th May - Fri 31st May 2024

Term Ends: Monday 22nd July 2024

### Inset Days/School Closures

Monday 4th September 2023 (Inset)

Tuesday 5th September 2023 (Inset)

Monday 6th May 2024 (Bank Holiday)