

Date: Friday, 17th November 2023

Issue: 54

MESSAGE FROM THE HEAD TEACHER

Welcome back to the second half of the autumn term!

As usual there is lots going on. I went to watch our school football team on Monday and, like last year, I was impressed with their positive attitude and approach to each game. I'm pleased to say that they won all three of their matches by some margin. Well done to all the children who took part and thank you to parents and carers for once again showing your support.

Our Reception children have almost had the full remit of emergency services in to visit them recently; from the Fire Service to Nurses, Police and Paramedics! They really are very much learning about the kind of people that can help us in our every-day lives. Year 1 have had the 'Animal Man' in which I know they were all very excited about, and Year 6 went on their Geography trip to Birmingham which again was a huge success – at least it didn't snow this year!

It was also Anti-Bullying week this week and we kicked it off on Monday with the children wearing odd socks and our Anti-Bullying Ambassadors presenting to the whole school in assembly. Our ambassadors are an absolute credit to the school, and we are very proud of what they do around our school during play and lunchtimes.

You will have seen our recent reminder letter about all our Christmas events that are taking place. Please look out for where your child is involved and join in our celebrations where you can!

Have a restful weekend.

S. Ray

EARRINGS

A reminder that only small stud earrings are acceptable to wear in school due to health and safety reasons. Earrings must be removed for all PE lessons, including swimming lessons, and plasters to cover earrings are not acceptable.

Unfortunately children will not be able to participate in swimming or active PE lessons if they are unable to remove their piercings.



AFTER SCHOOL CLUB

After School Club will be CLOSED on Friday 1st December due to the

PTA Christmas Fayre.

Apologies for any inconvenience.



EVENTS

2023

Wed 22nd Nov
Y3 Trip to Black Country Museum

Thurs 23rd Nov
Y4 Anglo Saxon Day

Fri 24th Nov
Mufti Day for PTA

Tues 28th Nov
Y2 Field Work

Fri 1st Dec
Mufti Day for PTA

Christmas Fayre
3.30pm—5.30pm

Mon 4th Dec
Santa visit

Tues 5th Dec
Elderly Community Christmas Lunch

Weds 6th Dec
Reception Nativity

Y6 St John's Carol Service

Thurs 7th Dec
Nursery Xmas Celebration

KS1 Xmas Dinner

Xmas Jumper Day

Fri 8th Dec
KS2 Xmas Dinner

Xmas Jumper Day



SUCCESS CORNER



Estelle (3T) recently completed a spooky welly walk dressed as Wednesday from the Addams Family. She walked 1 mile with her little sister and raised £100 for Roy Castle Lung Cancer Foundation charity.

Well done to Thomas (3T) who raised £80 for Birmingham Hospice by taking part in The Big Birmingham Readathon



FOOTBALL

The Y6 Newfield football team played at Leasowes High School. We got 8 goal difference winning 3 out of 3 games (3-0, 2-0, 3-0) against Cradley CoE, Hasbury St Margarets and Colley Lane, which made us probably top 3.

We are really excited for our next game!

GO NEWFIELD!

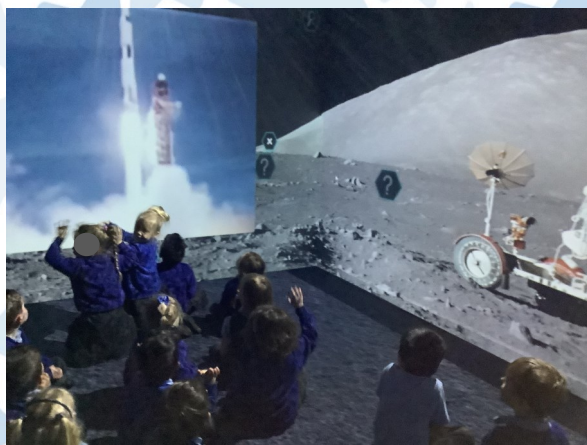
Written by Aice and Oliver

YEAR 1 AUTHOR VISIT



Angie Chater read her story 'Stanley's Incredible Journey' to us. Some of the children got picked to be a twirling snowflake in the story and we all joined in to help Stanley the snowflake find his parents in the story.

RECEPTION



Reception have visited the moon and found out all about Neil Armstrong and what the moon was like. It was great exploring space in our portal.

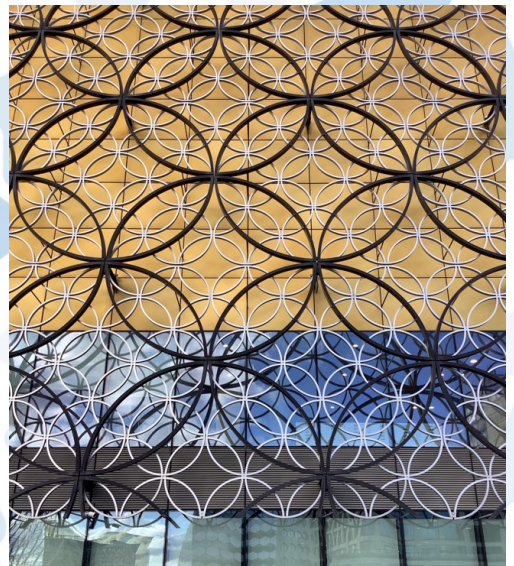
YEAR 1

The animal man brought in snakes, giant hissing cockroaches, a skunk, a gecko and a bearded dragon. The children listened carefully to lots of interesting facts about each animal and then got a chance to stroke them, hold them and even have 'Monty' the python around their neck!



YEAR 6

Year 6 had a fantastic trip to Birmingham city centre last week for our geography fieldwork trip. We took a walking tour of the city, stopping at three locations to collect data relating to our key question, 'How is Birmingham changing?'. We were able to see the buildings we have studied in our art and geography lessons and ended our day with a trip to the top of the Birmingham Library where we were rewarded with fantastic views of the city!



BIRMINGHAM

Healthier Futures
Black Country Integrated Care System

Dudley People Panel

**Brett Young Carers Hub, Halesowen
B63 3TB**

SCAN ME



**Join us for a cuppa at our People Panel and have
your say on the things that matter most to you.
With your help we can improve our health and
care system and make sure all voices
are heard and valued.**



Friday 24 November



11am - 1:30pm

From 1:30pm until 3pm, there will be free, expert
health checks and other information stalls.

People can book by calling [0121 612 1447](tel:01216121447)
or email involve.blackcountry@nhs.net

Healthier place Healthier people Healthier futures

Operation Encompass

The school has been given the opportunity to take part in a project that will run jointly between schools and West Midlands Police. Operation Encompass is the reporting to schools, prior to 9am on the next school day, when a child or young person has been exposed to, or involved in, any domestic incident.

Operation Encompass will ensure that a member of the school staff, known as a Key Adult, is trained to allow them to liaise with the police and to use the information that has been shared, in confidence, while ensuring that the school is able to make provision for possible difficulties experienced by children, or their families, who have been involved in, or exposed to, a domestic abuse incident.

We are keen to offer the best support possible to all our pupils and we believe this will be extremely beneficial for all those involved.



ATTENDANCE MATTERS!

When you're in school you...



Have the best possible start in life!

At Newfield Park every day counts!

USEFUL INFORMATION

SCHOOL OFFICE

A reminder to parents that the School Office is open from 8:00AM UNTIL 4:00PM.

You can email the school office for any non urgent enquiries including absences on:

info@newfield.dudley.sch.uk



SCHOOL DINNERS

School dinners must be ordered by Sunday evening for the commencing week.

Unfortunately we may only be able to offer a very limited choice if no order is received, this is due to orders already being placed with our suppliers.



Before & After School Club

Club is highly subscribed at the moment. If your child is not booked in please do not just turn up as there may not be a space. Bookings should be made by Sunday evening online.

New timings & charges: Breakfast club (7.30am - 8.55am) £5.00

After School Club (3.15pm - 5.30pm prompt) £8.00

Please contact Mrs Grant, BASC Manager on 07768893697



PE

On PE days your child can come to school in their PE Kit.
PE will take place both indoors and outdoors.

RB Monday

RRY Tuesday

Year 1 Wednesday & Friday

Year 2 Wednesday

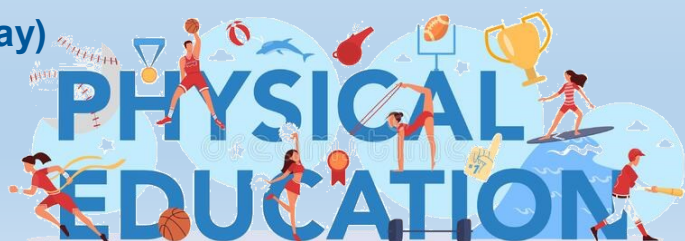
Year 3 Monday (3P also on Tuesday)

Year 4 Thursday

Year 5 Monday

Year 6 Tuesday

No jewellery, including earrings, should be worn and long hair should be tied up.



USEFUL INFORMATION



Please click on the above picture for further information on childhood vaccinations

NHS
Black Country



Please click on the above picture for further information on whether to send your child to school due to illness

Healthier Futures
Black Country Integrated Care System

NEWFIELD COMMUNITY

Would your grandparent's or your elderly neighbours like to be part of our Newfield Park Community?

If yes, then please contact the school office



Important Notice

CHILDREN USING THE MILLENNIUM GARDEN EQUIPMENT AFTERSCHOOL MUST BE SUPERVISED BY AN ADULT AT ALL TIMES AND VACATE BY 3:30PM

PARKING ON SCHOOL SITE

We politely ask parents to not park on the staff car park.

This includes when dropping/collecting children from after school clubs and BASC

DOGS ON SCHOOL GROUNDS

Please be aware that **no dogs**, either walking or being carried are allowed anywhere on the school grounds.



CLIMBING TREES



Please **DO NOT** allow your children to climb the trees on the school grounds.

PARKING

We are receiving numerous complaints from local residents with regards to parking on Whittingham Road.

Could we please ask that parents/carers park considerately and walk whenever possible.

Many thanks for your support.



SAFETY ADVICE

The Child Accident Prevention Trust has some good information on safety advice

Please click on the picture below for further information





Should I keep my child off school?



Yes

Until...

Chickenpox	at least 5 days from the onset of the rash and until all blisters have crusted over
Diarrhoea and Vomiting	48 hours after their last episode
Cold and Flu-like illness (including COVID-19)	they no longer have a high temperature and feel well enough to attend. Follow the national guidance if they've tested positive for COVID-19.
Impetigo	their sores have crusted and healed, or 48 hours after they started antibiotics
Measles	4 days after the rash first appeared
Mumps	5 days after the swelling started
Scabies	they've had their first treatment
Scarlet Fever	24 hours after they started taking antibiotics
Whooping Cough	48 hours after they started taking antibiotics

No

but make sure you let their school or nursery know about...

Hand, foot and mouth	Glandular fever
Head lice	Tonsillitis
Threadworms	Slapped cheek



SCAN ME

Advice and guidance

To find out more, search for health protection in schools or scan the QR code or visit <https://qrco.de/minfec>.

STAY & PLAY

Join us on
Tuesday Mornings
9:00am - 10:30am

We have a thriving Stay & Play for pre-school children where we offer a variety of planned activities designed to meet your child's developmental needs through creative and physical play.
Join other parents/ grandparents /carers for a coffee and a chat!



£1 per child, 50p for additional children
(drinks and healthy snacks included)

We look forward to seeing you!

Online safety update

- Our school uses the RM SafetyNet filtering system, which blocks inappropriate content and operates on all devices connected to our network.
- RM also provide 'Smoothwall', an additional filtering system which monitors the use of devices by staff and pupils in real-time; our head and DSL are immediately notified of any causes for concern.
- When using Teams and other web-based Microsoft applications, children are only able to communicate with pupils and staff within Newfield Park; external contacts are blocked.
- The RM Unify service provides a secure web-portal through which children can access several services using their own password.
- Most devices in school are password controlled: children have their own passwords and log-ins.
- Children are encouraged to use well-known, reliable websites when researching a topic, which are often provided to them by their teacher using a QR Code or URL.



Check out our twitter page on: https://twitter.com/newfield_park

ATTENDANCE

13th - 17th November



RB	89.31		4OR	95.48
RRY	93.45		4S	91.38
1J	96.00		5C	99.00
1L	93.00		5R	98.33
2H	97.33		6A	97.78
2R	98.33		6M	93.79
3P	88.97		6R	90.67
3T	95.52			

Well done 5C!

All absences are recorded and followed up.

Please email the info box to let us know when your child is absent before 9:30am on the day of the absence .

TERM DATES

Autumn Term 2023

Term Starts: Monday 4th September 2023
Half Term: Mon 30th Oct - Fri 3rd Nov 2023
Term Ends: Friday 22nd December 2023

Spring Term 2024

Term Starts: Monday 8th January 2024
Half Term: Mon 12th Feb - Fri 16th Feb 2024
Term Ends: Friday 22nd March 2024

Summer Term 2024

Term Starts: Monday 8th April 2024
Half Term: Mon 27th May - Fri 31st May 2024
Term Ends: Monday 22nd July 2024

Inset Days/School Closures

Monday 4th September 2023 (Inset)
Tuesday 5th September 2023 (Inset)
Monday 6th May 2024 (Bank Holiday)