

**Date: Friday, 1st March 2024**

**Issue: 59**

## MESSAGE FROM THE HEAD TEACHER

The second week of term and all is well...

Our Digital Learning Team met yesterday to talk about the Portal (our immersive room) and how it's being used. It's remarkable how much it's now being used not only to support the curriculum, but also as a sensory space for some of our children with special needs. When we join the trust we will hopefully be able to share everything that's been made for their schools and ours so that we can have a full suite of resources at our fingertips.

On the subject of Shireland, hopefully you will have seen the uniform by now and put in your order for a jumper or cardigan. There are lots of introductory meetings happening at the moment as we are gradually being introduced to their various teams. We already have their IT technician on site every Friday, and this week I had their buildings team walk round with me to measure up different parts of the building that I would like to improve. It's going to be great to have partners and colleagues to work with and share ideas.

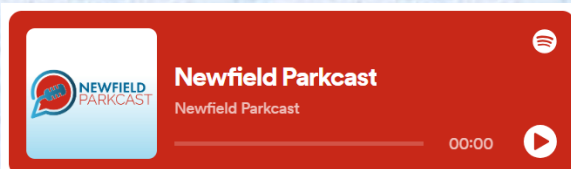
Year 4 had an exciting trip on Tuesday as they all went off to visit West Midlands Police Museum in Birmingham. They came back full of excitement and knowledge. I haven't had a chance to talk to them yet, but I'll have a conversation with them at some point to find out what went on.

Have a great weekend.

S. Py.

## NEWFIELD PARKCAST

Coming soon to your podcast provider...



We are launching an exciting new project: the Newfield Parkcast. This weekly podcast, which will be available on major podcasting platforms such as Spotify, Google Play and Apple Music, will give children in years 5 and 6 a platform to write their own shows and discuss topics of their choosing. Children have already chosen their topics and begun writing their scripts, and we have a jam-packed schedule to look forward to over the next few months! Shows will launch weekly on Thursday evenings - just search **Newfield Parkcast** wherever you get your podcasts.

## EVENTS

**2024**

**Thurs 7th March**  
World Book Day

**Fri 8th March**  
Reception Trip to  
Sycamore Centre

Y5 Author Visit Trip to  
Earls

**Mon 11th March**  
Parents Evening 1

**Tues 12th March**  
Y3 Stone Age Day

**Wed 13th March**  
Parents Evening 2

**Thurs 14th March**  
3P Class Assembly

Mobile Farm Visit for  
Nursery & Y2

**Fri 15th March**  
Red Nose Day

**Thurs 21st March**  
4OR Class Assembly

**Fri 22nd March**  
Talent Show

End of Term!

## Notice

**Special World Book  
Day Menu for  
Thursday 7th March**  
see attached menu



WORLD  
BOOK  
DAY

# We're celebrating World Book Day

## 7th March 2024



Changing lives through a love of books and reading

WORLD  
BOOK  
DAY



### Menu

*'Hot Dog'*  
(Pork Sausage)  
(Vegan Sausage)



*'The Perfect Hamburger'*  
(Beef Burger)  
(Quorn Burger)



*'Goodbye Mr Chips'*  
(French Fries)

*'I Don't Like Salad'*  
(Mixed Salad)



*'Supertato'*  
(Jacket Potato with Beans, Cheese or Tuna)



### Dessert

*'The Ice Monster'*  
(Ice Cream)



*'Charlie And The Chocolate Factory'*  
(Chocolate Cake & Chocolate Custard)



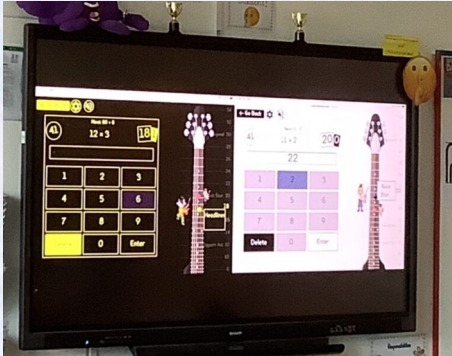
## Y3 & Y4 TTRS DAY



The children have taken part in Times Table Rock Stars Day and have had a great time rocking out whilst completing times table games.

Some children have even taken part in a Year 3/4 TTRS battle which got very competitive.

It's been a great day for them all!



## MATHS CHAMPIONSHIPS



Our Year 5 and 6 team: Jaylen and Stevie (Year 5) Jude, Leo, Harry and Mustafa (Year 6) attended the Maths Championships on Wednesday.

They demonstrated excellent teamwork and thoroughly enjoyed all the different activities.



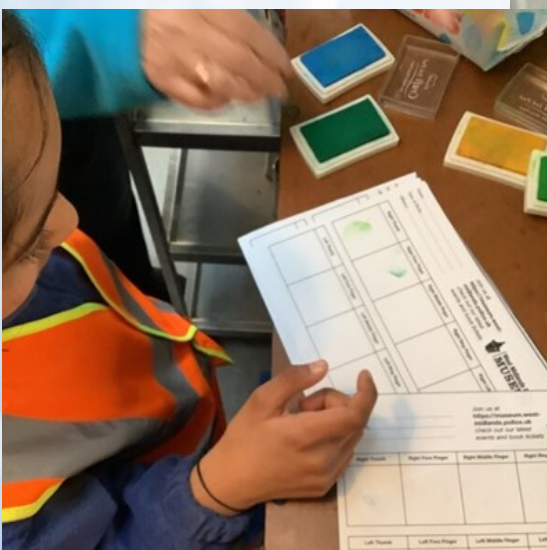
Sadly, they didn't make it through to the final, but we are extremely proud of them.



## Y4 VISIT TO THE POLICE MUSEUM

On Tuesday, Year 4 went on a History Visit to the West Midlands Police Museum. The children learnt about crime and punishment through the ages and investigated what life was like in a 'lock up'. The children undertook a forensic trail and had their finger prints and mug shots taken!

It was an extremely successful trip and the children were well behaved as usual!



Harriet- 'I absolutely loved the Police Museum. My favourite bit was going in the cells'  
Mila- 'I liked the way you pretended to be police and solved a case, using evidence'  
George- 'It was really dark in the cell'



Sessions can be attended face to face or via TEAMS  
Please email to book:

[parenting@dudley.gov.uk](mailto:parenting@dudley.gov.uk)

Two hours is all you need for a Triple P discussion group/workshop for Developing good bedtime routines or Hassle-free mealtimes with children.

😊 Perfect for adding to your tool kit of ideas 😊



## **SLEEP and MEALTIME WORKSHOPS**

Would you like your child to sleep in their own bed? Not call out? Sleep longer?

Does your child have nightmares/terrors? Is your child a picky eater? Do they refuse to sit at a table or eat well? Is your child aged 1-11 years? **Then these could be for you!**

| Day       | Date    | Time             | Venue                             | Workshop type                             |
|-----------|---------|------------------|-----------------------------------|---|
| Wednesday | 10/4/24 | 9:45 to 11:45 am | Halesowen Family Hub-DY9 8HT      | Sleep-Developing good bedtime routines    |
| Tuesday   | 21/5/24 | 12:30 to 2:30 pm | Stourbridge family hub-DY8 1XF    | Sleep-Developing good bedtime routines    |
| Monday    | 10/6/24 | 12:30 to 2:30 pm | Brierley Hill Family Hub-DY5 3DY  | Food- Hassle free mealtimes with children |
| Thursday  | 18/7/24 | 9:45 to 11:45 am | Coseley Family Hub-WV14 9DS       | Sleep-Developing good bedtime routines    |
| Wednesday | 25/7/24 | 9:45 to 11:45 am | Dudley Central Family Hub-DY2 8LJ | Food- Hassle free mealtimes with children |
| Wednesday | 25/9/24 | 9:45 to 11:45    | Dudley Central Family Hub-DY2 8LJ | Sleep-Developing good bedtime routines    |



## Operation Encompass

The school has been given the opportunity to take part in a project that will run jointly between schools and West Midlands Police. Operation Encompass is the reporting to schools, prior to 9am on the next school day, when a child or young person has been exposed to, or involved in, any domestic incident.

Operation Encompass will ensure that a member of the school staff, known as a Key Adult, is trained to allow them to liaise with the police and to use the information that has been shared, in confidence, while ensuring that the school is able to make provision for possible difficulties experienced by children, or their families, who have been involved in, or exposed to, a domestic abuse incident.

We are keen to offer the best support possible to all our pupils and we believe this will be extremely beneficial for all those involved.



## ATTENDANCE MATTERS!

When you're in school you...



Have fun



Make new friends



Gain qualifications



Achieve



Develop new skills



Experience new things

Build your confidence



& self esteem

Develop awareness of other cultures, religion, ethnicity and gender differences



Have the best possible start in life!

At Newfield Park every day counts!

# USEFUL INFORMATION

## SCHOOL OFFICE

A reminder to parents that the School Office is open from 8:00AM UNTIL 4:00PM.

You can email the school office for any non urgent enquiries including absences on:

[info@newfield.dudley.sch.uk](mailto:info@newfield.dudley.sch.uk)



## SCHOOL DINNERS

School dinners must be ordered by Sunday evening for the commencing week.

Unfortunately we may only be able to offer a very limited choice if no order is received, this is due to orders already being placed with our suppliers.



## Before & After School Club

Club is highly subscribed at the moment. If your child is not booked in please do not just turn up as there may not be a space. Bookings should be made by Sunday evening online.

New timings & charges: Breakfast club (7.30am - 8.55am) £5.00

After School Club (3.15pm - 5.30pm prompt) £8.00

Please contact Mrs Grant, BASC Manager on 07768893697

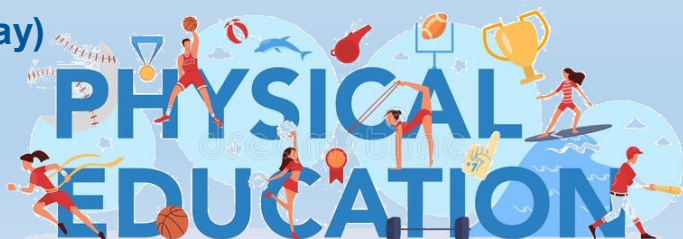


## PE

On PE days your child can come to school in their PE Kit.  
PE will take place both indoors and outdoors.

|        |                             |
|--------|-----------------------------|
| RB     | Monday                      |
| RRY    | Tuesday                     |
| Year 1 | Wednesday & Friday          |
| Year 2 | Wednesday                   |
| Year 3 | Monday (3P also on Tuesday) |
| Year 4 | Thursday                    |
| Year 5 | Monday                      |
| Year 6 | Tuesday                     |

No jewellery, including earrings, should be worn and long hair should be tied up.





# USEFUL INFORMATION



Please click on the above picture for further information on childhood vaccinations

**NHS**  
Black Country



Please click on the above picture for further information on whether to send your child to school due to illness

**Healthier Futures**  
Black Country Integrated Care System

## NEWFIELD COMMUNITY

Would your grandparent's or your elderly neighbours like to be part of our Newfield Park Community?

If yes, then please contact the school office



## Important Notice

CHILDREN USING THE  
MILLENNIUM GARDEN  
EQUIPMENT AFTERSCHOOL  
MUST BE SUPERVISED BY  
AN ADULT AT ALL TIMES  
AND VACATED BY 3:30PM

## PARKING ON SCHOOL SITE

We politely ask parents to not park on the staff car park.

This includes when dropping/collecting children from after school clubs and BASC

## DOGS ON SCHOOL GROUNDS

Please be aware that **no dogs**, either walking or being carried are allowed anywhere on the school grounds.



## CLIMBING TREES



Please **DO NOT** allow your children to climb the trees on the school grounds.

## PARKING

We are receiving numerous complaints from local residents with regards to parking on Whittingham Road and surrounding roads.

Could we please ask that parents/carers park considerately and walk whenever possible.

Many thanks for your support.



## SAFETY ADVICE

The Child Accident Prevention Trust has some good information on safety advice

Please click on the picture below for further information





## STAY & PLAY

Join us on  
**Tuesday Mornings**  
**9:00am - 10:30am**

We have a thriving Stay & Play for pre-school children where we offer a variety of planned activities designed to meet your child's developmental needs through creative and physical play.  
Join other parents/ grandparents /carers for a coffee and a chat!



£1 per child, 50p for additional children  
(drinks and healthy snacks included)

We look forward to seeing you!

## Online safety update

- Our school uses the RM SafetyNet filtering system, which blocks inappropriate content and operates on all devices connected to our network.
- RM also provide 'Smoothwall', an additional filtering system which monitors the use of devices by staff and pupils in real-time; our head and DSL are immediately notified of any causes for concern.
- When using Teams and other web-based Microsoft applications, children are only able to communicate with pupils and staff within Newfield Park; external contacts are blocked.
- The RM Unify service provides a secure web-portal through which children can access several services using their own password.
- Most devices in school are password controlled: children have their own passwords and log-ins.
- Children are encouraged to use well-known, reliable websites when researching a topic, which are often provided to them by their teacher using a QR Code or URL.



Check out our twitter page on: [https://twitter.com/newfield\\_park](https://twitter.com/newfield_park)

## ATTENDANCE

26th Feb—1st March



|     |       |  |     |       |
|-----|-------|--|-----|-------|
| RB  | 93.79 |  | 4OR | 91.61 |
| RRY | 96.67 |  | 4S  | 97.24 |
| 1J  | 98.62 |  | 5C  | 97.33 |
| 1L  | 92.41 |  | 5R  | 98.00 |
| 2H  | 95.00 |  | 6A  | 97.41 |
| 2R  | 94.67 |  | 6M  | 84.48 |
| 3P  | 91.33 |  | 6R  | 91.33 |
| 3T  | 99.29 |  |     |       |

Well done 3T!

All absences are recorded and followed up.

Please email the info box to let us know when your child is absent before 9:30am on the day of the absence .

## TERM DATES

### Autumn Term 2023

Term Starts: Monday 4th September 2023  
Half Term: Mon 30th Oct - Fri 3rd Nov 2023  
Term Ends: Friday 22nd December 2023

### Spring Term 2024

Term Starts: Monday 8th January 2024  
Half Term: Mon 12th Feb - Fri 16th Feb 2024  
Term Ends: Friday 22nd March 2024

### Summer Term 2024

Term Starts: Monday 8th April 2024  
Half Term: Mon 27th May - Fri 31st May 2024  
Term Ends: Monday 22nd July 2024

### Inset Days/School Closures

Thursday 2nd May 2024 (Voting Day)  
Monday 6th May 2024 (Bank Holiday)  
Monday 22nd July 2024 (Inset)



**"THIS MORNING,  
HE HAD A RUNNY  
NOSE... BUT LOOK  
AT HIM NOW!"**

**MOMENTS  
MATTER,  
ATTENDANCE  
COUNTS.**



**HM Government**

Head to the NHS website to find out more.



**MOMENTS  
MATTER,  
ATTENDANCE  
COUNTS.**



**"THIS MORNING, HE  
WAS WORRIED ABOUT  
SCHOOL... BUT LOOK  
AT HIM NOW!"**

**MOMENTS  
MATTER,  
ATTENDANCE  
COUNTS.**



**HM Government**

Head to the Education Hub to find out more.



**MOMENTS  
MATTER,  
ATTENDANCE  
COUNTS.**