

Date: Friday, 27th October 2023

Issue: 53

MESSAGE FROM THE HEAD TEACHER

It's been a long half term. They are not usually eight weeks, but it has meant that we can fit quite a lot of leaning in for the children as well as our usual events and activities. One such event was the Halesowen Cross Country Competition. We host this event every year and many schools across Halesowen attend. It's our older children who take part and again they did really well this year; the girls and boys being placed second and third overall respectively. We also had one of girls placed second in the girls' individual race. What was most impressive was the attitude that all of our children showed to not just our competitors, but all who took part, encouraging and clapping everyone on to the very end. The Newfield children were a credit to our school. This sentiment was also passed onto me by one or two of our parents.

I've really enjoyed watching our Class Parent Presentations this half term. They have demonstrated the breadth and depth of the curriculum that we teach here, and I think that many parents who have attended have been impressed with just how much the children have learnt across so many areas of the curriculum. It's obviously a credit to the children in terms of their dedication and learning attitude, but also a credit to Ms Malcolm and our teaching staff who have worked hard over the last few years to develop a bright and engaging curriculum.

Next half term sees the onset of all things Christmas and, although it's always immensely busy, it's a lovely time to be in the profession. The children get more excited the closer the big day comes, and both ourselves and the PTA have lots of events organised so that you can join us and share in their excitement as Christmas approaches.

Thanks you once again for your continued support.

Have a great half term!

S. Ry

EVENTS

2023

Tues 7th Nov

Y6 Trip to Birmingham
Group 1

Wed 8th Nov

Y6 Trip to Birmingham
Group 2

Thurs 9th Nov

5RClass Assembly

Mon 13th Nov

Y1 Animal Man visit

Parents Evening 1

Tues 14th Nov

Rec & Y1 Author visit

Wed 15th Nov

Parents Evening 2

Fri 17th Nov

Mufti Day for
Children in Need

Wed 22nd Nov

Y3 Trip to Black Country
Museum

Thurs 23rd Nov

Y4 Anglo Saxon Day

**BLACK COUNTRY
FOODBANK**
LOVE . CONNECT . INVEST

**HARVEST
2023**



THANK YOU!

Certificate of Appreciation and Thanks awarded to:

Newfield Park Primary School

Thank you so much for collecting food and toiletries for families and individuals in your local community. We will use all the food you have donated to make emergency food parcels for people in crisis.

You have donated 432kgs of food and 3kgs of non-food, an incredible amount, enough to provide 864 meals and 3 toiletry packs. This is absolutely wonderful, and we are so thankful that you have supported us in this amazing way.

THANK YOU!!

Registered Charity No: 1136676

Reminder

**School closed next week
for half term**

**Children back on
6th November**

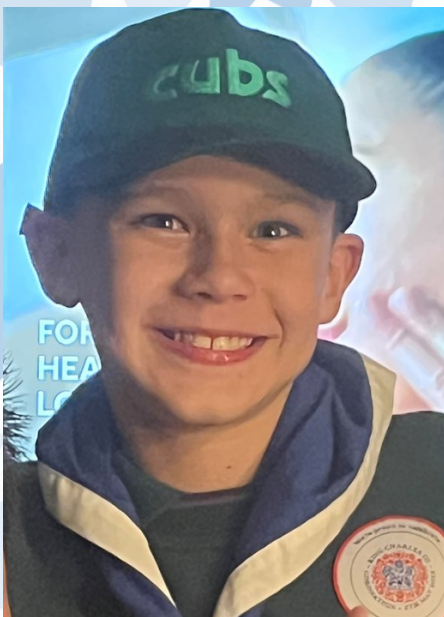


SUCCESS CORNER



Alex (2R) recently met the founder of Black History Month UK, Akyaba Addai Sebo, and learned a little of his story.

Frankie (5C) came 3rd at the national indoor arena representing the West Midlands in the inter regional championships



Jacob (4OR) has recently learnt first aid at his Cub Scouts group and demonstrated on his family how to put them in the recovery position! Such an amazing skill to learn at such a young age.

Helping after every football match at Halesowen town football club keeping it clean and ready for the next match. Well done Liv & Olivia (5C)





SUCCESS CORNER



Anacapri (RB) attends Kung Fu Cubs twice a week and recently achieved her new belt - Orange and White!

CROSS COUNTRY

Last week Newfield Park Primary School competed against other local schools in the annual Cross Country running competition held here at Newfield.

All of our children did brilliantly, with the girls' team finishing 2nd overall and our boys' team finishing 3rd! A special mention for Lyla too, who finished the race in second place! Well done again!

GAMBIA

All children recently had an assembly discussing the sponsorship of Gambia children in order to attend school.

Each year group sponsor their own child and learn about how they are getting on in school.

Thank you for everyone who donated to our mufti day which was in aid of raising sponsorship.



RECEPTION

As part of our people who help us project we had a visit from the police. They talked about their jobs and even let us go in the police van and set off the lights and sirens.



Do you have knitting or sewing skills?
Could you help our Reception classes with creating resources?
Please speak with Mrs Beulah for further info

sparkle

explode

pop

bang

zoom

whoosh

Bonfire Bonanza Menu

Monday 6th November 2023

oooh!

crackle

Bonfire Bangers

Hotdogs

Veggie Hotdogs

Firecracker

Chicken Nuggets

Chips & Beans

Jumping Jackets

Jacket Potatoes with
Cheese / Beans / Tuna

Dazzling

Sugar Donuts

Fruit Salad / Yogurts

flicker

whiz

fizz

firework

bonfire

flames



HOUSE OF COMMONS
LONDON SW1A 0AA

James Morris MP

Halesowen and Rowley Regis

25th September 2023

Dear Mr Payne,

RE: Christmas Card Competition 2023

It is that time of year again, and I am writing to launch my 'Christmas Card Competition 2023'. Since 2010 I have held annual competitions for children who attend a school within the Halesowen & Rowley Regis constituency.

The competition has attracted thousands of entries from different age groups. The winner of the competition will have their drawing produced on the front of my Christmas card, which is sent to over 300 people, including local and national press, senior politicians, including the Prime Minister, and many charitable organisations. As part of the competition prizes are presented to the winner and runners up during school assemblies along with a framed certificate.

This year's timetable will be:

Monday 25th September 2023 - Competition to be launched

Friday 10th November - Deadline for submissions

We are planning to present certificates and prizes to the winner, and runners-up on Friday 8th December; my office will be in contact closer to Christmas to arrange a visit. Please could you pass this letter onto members of your teaching team so that they can plan ahead for pupils to participate in this year's competition.

All entries should be sent to: Trinity Point, New Road, Halesowen, West Midlands, B63 3HY and marked clearly with child's name, age and school.

Yours sincerely,

James Morris MP

Constituency Office: 0121 550 6777

E-mail: james.morris.mp@parliament.uk Website: www.jamesmorris.co.uk

Operation Encompass

The school has been given the opportunity to take part in a project that will run jointly between schools and West Midlands Police. Operation Encompass is the reporting to schools, prior to 9am on the next school day, when a child or young person has been exposed to, or involved in, any domestic incident.

Operation Encompass will ensure that a member of the school staff, known as a Key Adult, is trained to allow them to liaise with the police and to use the information that has been shared, in confidence, while ensuring that the school is able to make provision for possible difficulties experienced by children, or their families, who have been involved in, or exposed to, a domestic abuse incident.

We are keen to offer the best support possible to all our pupils and we believe this will be extremely beneficial for all those involved.



ATTENDANCE MATTERS!

When you're in school you...



Have the best possible start in life!

At Newfield Park every day counts!

USEFUL INFORMATION

SCHOOL OFFICE

A reminder to parents that the School Office is open from 8:00AM UNTIL 4:00PM.

You can email the school office for any non urgent enquiries including absences on:

info@newfield.dudley.sch.uk



SCHOOL DINNERS

School dinners must be ordered by Sunday evening for the commencing week.

Unfortunately we may only be able to offer a very limited choice if no order is received, this is due to orders already being placed with our suppliers.



Before & After School Club

Club is highly subscribed at the moment. If your child is not booked in please do not just turn up as there may not be a space. Bookings should be made by Sunday evening online.

New timings & charges: Breakfast club (7.30am - 8.55am) £5.00

After School Club (3.15pm - 5.30pm prompt) £8.00

Please contact Mrs Grant, BASC Manager on 07768893697

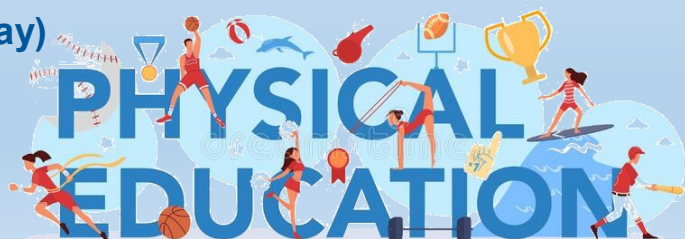


PE

On PE days your child can come to school in their PE Kit.
PE will take place both indoors and outdoors.

RB	Monday
RRY	Tuesday
Year 1	Wednesday & Friday
Year 2	Wednesday
Year 3	Monday (3P also on Tuesday)
Year 4	Thursday
Year 5	Monday
Year 6	Tuesday

No jewellery, including earrings, should be worn and long hair should be tied up.



USEFUL INFORMATION



Please click on the above picture for further information on childhood vaccinations

NHS
Black Country



Please click on the above picture for further information on whether to send your child to school due to illness

Healthier Futures
Black Country Integrated Care System

NEWFIELD COMMUNITY

Would your grandparent's or your elderly neighbours like to be part of our Newfield Park Community?

If yes, then please contact the school office



Important Notice

CHILDREN USING THE
MILLENNIUM GARDEN
EQUIPMENT AFTERSCHOOL
MUST BE SUPERVISED BY
AN ADULT AT ALL TIMES
AND VACATE BY 3:30PM

PARKING ON SCHOOL SITE

We politely ask parents to not park on the staff car park.

This includes when dropping/collecting children from after school clubs and **BASC**

DOGS ON SCHOOL GROUNDS

Please be aware that **no dogs**, either walking or being carried are allowed anywhere on the school grounds.



CLIMBING TREES



Please **DO NOT** allow your children to climb the trees on the school grounds.

Earrings

This year we have transferred to Sandwell Aquatics Centre for our Y3 swimming lessons as the result of disruption at Haden Hill Pool.

Sandwell Aquatics Centre's policy on the wearing of earrings, is that they can't be worn in the pool and plasters to cover recently pierced ears are not acceptable. Children can also only attend the facility if they are having swimming lessons, not to spectate.

If your child has recently had their ears pierced, and they cannot be removed, they will stay in school and take part in PE lessons with their parallel class until they are able to resume swimming lessons.

This advice is also relevant for those parents with children in Y2 and below, who may be considering ear piercing for their children.

SAFETY ADVICE

The Child Accident Prevention Trust has some good information on safety advice

Please click on the picture below for further information





Should I keep my child off school?



Yes

Until...

Chickenpox	at least 5 days from the onset of the rash and until all blisters have crusted over
Diarrhoea and Vomiting	48 hours after their last episode
Cold and Flu-like illness (including COVID-19)	they no longer have a high temperature and feel well enough to attend. Follow the national guidance if they've tested positive for COVID-19.
Impetigo	their sores have crusted and healed, or 48 hours after they started antibiotics
Measles	4 days after the rash first appeared
Mumps	5 days after the swelling started
Scabies	they've had their first treatment
Scarlet Fever	24 hours after they started taking antibiotics
Whooping Cough	48 hours after they started taking antibiotics

No

but make sure you let their school or nursery know about...

Hand, foot and mouth	Glandular fever
Head lice	Tonsillitis
Threadworms	Slapped cheek



SCAN ME

Advice and guidance

To find out more, search for **health protection in schools** or scan the QR code or visit <https://qrco.de/minfec>.

STAY & PLAY

Join us on
Tuesday Mornings
9:00am - 10:30am

We have a thriving Stay & Play for pre-school children where we offer a variety of planned activities designed to meet your child's developmental needs through creative and physical play.
Join other parents/ grandparents /carers for a coffee and a chat!



£1 per child, 50p for additional children
(drinks and healthy snacks included)

We look forward to seeing you!

Online safety update

- Our school uses the RM SafetyNet filtering system, which blocks inappropriate content and operates on all devices connected to our network.
- RM also provide 'Smoothwall', an additional filtering system which monitors the use of devices by staff and pupils in real-time; our head and DSL are immediately notified of any causes for concern.
- When using Teams and other web-based Microsoft applications, children are only able to communicate with pupils and staff within Newfield Park; external contacts are blocked.
- The RM Unify service provides a secure web-portal through which children can access several services using their own password.
- Most devices in school are password controlled: children have their own passwords and log-ins.
- Children are encouraged to use well-known, reliable websites when researching a topic, which are often provided to them by their teacher using a QR Code or URL.



Check out our twitter page on: https://twitter.com/newfield_park

ATTENDANCE

23rd - 27th October



RB	97.93		4OR	93.55
RRY	99.65		4S	95.33
1J	91.67		5C	96.55
1L	95.17		5R	98.33
2H	96.67		6A	95.36
2R	92.33		6M	93.79
3P	94.83		6R	96.33
3T	92.76			

Well done RRY!

All absences are recorded and followed up.

Please email the info box to let us know when your child is absent before 9:30am on the day of the absence .

TERM DATES

Autumn Term 2023

Term Starts: Monday 4th September 2023
Half Term: Mon 30th Oct - Fri 3rd Nov 2023
Term Ends: Friday 22nd December 2023

Spring Term 2024

Term Starts: Monday 8th January 2024
Half Term: Mon 12th Feb - Fri 16th Feb 2024
Term Ends: Friday 22nd March 2024

Summer Term 2024

Term Starts: Monday 8th April 2024
Half Term: Mon 27th May - Fri 31st May 2024
Term Ends: Monday 22nd July 2024

Inset Days/School Closures

Monday 4th September 2023 (Inset)
Tuesday 5th September 2023 (Inset)
Monday 6th May 2024 (Bank Holiday)